

Size structure, weight-length relationship and condition factor K of the endogenous Cameroon giant frog *Conraua goliath* (Boulenger, 1906) in its natural environment

Liliane Fleurette Moumegni Monthe^{1,*}, Claudine Tekounegning Tiogue²,
Ferdinand Ngoula³, And Joseph Tchoumboue¹

¹University of Dschang, Faculty of Agronomy and Agricultural Sciences (FASA),
Laboratory of Ichthyology and Applied Hydrobiology, BP 222 Dschang Cameroon.

²University of Ebolowa, Higher Institute of Agriculture, Water and Environment, BP 786
Ebolowa Cameroon

³University of Dschang, Faculty of Agronomy and Agricultural Sciences (FASA),
Laboratory of Physiology and Animal Health, BP 222 Dschang Cameroon.

Abstract

The growth characteristics of *Conraua goliath* (Boulenger, 1906), an endemic and endangered species in Cameroon, were evaluated in its natural habitat between October 2021 and November 2022 in order to contribute to its domestication and conservation. For this purpose, 139 specimens (55 males, 55 females, and 29 individuals of undifferentiated sex) were collected by fishermen from 3 sites (Loum, Penja, and Nlonako) in the Department of Moungo, Coastal Region of Cameroon. The frogs were measured, and their growth parameters were determined after dissection and macroscopic and microscopic observations. The maximum size observed is 33.5 cm (SVL) and 2529 g body weight (BW), and the minimum size is 5.3 cm (SVL) and 12 g body weight (BW). This species is more abundant in the rainy season, in frogs between 18 and 24 cm, and has a Caucasian and uni-modal size structure. Independent of sex and season, this species has a significant and high regression coefficient between length, weight, and isometric growth pattern. However, this growth varies according to sex. It ranges from isometric in males ($b = 2.82$) and undifferentiated sexes ($b = 2.85$) to negative allometry in females ($b = 2.21$). The condition factor K ranges from 3.28 to 14.24 (mean: 7.80 ± 1.95) and fluctuates according to the sex and size of the frog. According to our results, this species has a large size and a high growth rate and could therefore be an excellent candidate for domestication to ensure its conservation. However, studies on reproductive characteristics are needed to complete this work.

Introduction

The world is facing a massive decline in amphibian biodiversity [1] due to overexploitation and fragmentation of their habitats [2, 3]. According to the IUCN [4], approximately 220 amphibian species are used for food. In 2001, the Food and

Research Article

Open Access &

Peer-Reviewed Article

DOI: 10.14302/issn.2691-6622.ijar-23-4578

Corresponding author:

Liliane Fleurette Moumegni Monthe,
University of Dschang, Faculty of
Agronomy and Agricultural Sciences
(FASA), Laboratory of Ichthyology and
Applied Hydrobiology, BP 222 Dschang
Cameroon.

Received: May 02, 2023

Accepted: June 07, 2023

Published: July 24, 2023

Keywords:

African giant frog, allometry, condition
factor k, size distribution, Cameroon.

Citation:

Liliane Fleurette Moumegni
Monthe, Claudine Tekounegning
Tiogue, Ferdinand Ngoula and Joseph
Tchoumboue(2023) .Size structure, weight
-length relationship and condition factor K
of the endogenous Cameroon giant frog
Conraua goliath (Boulenger, 1906) in its
natural environment. International
Journal of Aquaculture Research and
Development - 1(3):1-14 .
<https://doi.org/10.14302/issn.2691-6622.ijar-23-4578>.

Agriculture Organization of the United Nations estimated the annual global consumption of frog legs at 4,716 tonnes [5]. Furthermore, livestock farms are a very small part of this market and more than 85% of the amphibians consumed would come from the wild, at the expense of the species concerned [6, 7]. In Africa, the majority of over-exploited amphibians are edible frogs [8, 9]. In countries such as Republic of Nigeria, Benin, Burkina Faso, Republic of Ghana and Madagascar, frogs are widely used as a source of animal protein, leading to a thriving trade [7, 9-11].

In Cameroon, the consumption of goliath frog meat is mainly observed among some populations in the coastal and southern regions [12-14]. Its growing market demand could be one of the main factors that significantly contributed to the decline of its natural population [12, 13, 15], as it is classified as an endangered species by the IUCN [1]. Despite its commercial importance and potential use as an aquaculture species, studies interested in its bio ecology are quite rare and limited [16]. Previous studies on the African giant frog have mainly focused on its distribution [15] and phylogeny [17, 18]. Some investigations have provided information on different aspects of the life cycle, including parental care, parasites and diet [12, 13, 19, 20], but no studies have been done to determine growth characteristics. However, the development of production of this species implies the control of its biological cycle. For that purpose, knowledge of growth and reproduction in the natural environment is essential. In order to contribute to a better understanding of the life cycle of *Conraua goliath* in its habitat and to assess its potential for aquaculture, this study investigated several aspects of growth, such as population structure, length-weight relationships and condition factor (K), which are crucial for the domestication of this species to ensure its conservation and enhancement.

Material and methods

Study area and period

The study was carried out in the Department of Mounjo, the coastal region of Cameroon (Figure 1), more specifically in the districts of Loum (LN: 4°41' and LE: 009°43'), Penja (LN: 4°45' and LE: 009°45') and Nlonako (LN: 4°40' and LE: 009°43') with an average altitude of 665 m. The study area is located in the Littoral Region of Cameroon. This area is characterized by an average temperature of 22.4°C, an average annual rainfall of 2700 mm [21, 22], and a relative humidity of 75%. The hydrographic network is dense and includes three main rivers, namely the Dibombé, the Mabombé and the Nkam, as well as a large number of rivers and streams. These rivers are perennial and their flow varies with the seasons.

Animal Material and Essay Conduct

A total of 139 specimens of *Conraua goliath*, 55 females, 55 males and 29 juveniles were collected between October 2021 and November 2022 at the sites of Loum, Penja, and Nlonako. The frogs were captured at night or before sunset using traps and hawks, then placed in plastic containers with air holes filled with river water at a depth of about 5 cm. The next morning, the frogs were individually weighed using a 1g precision portable scale, anaesthetized with chloroform and then sacrificed by cutting the nerve cord behind the brain [23]. Each specimen was marked according to the date of capture, packed in a glacier and examined within 12 hours at the Laboratory of Animal Biology and Physiology of the University of Yaoundé 1.

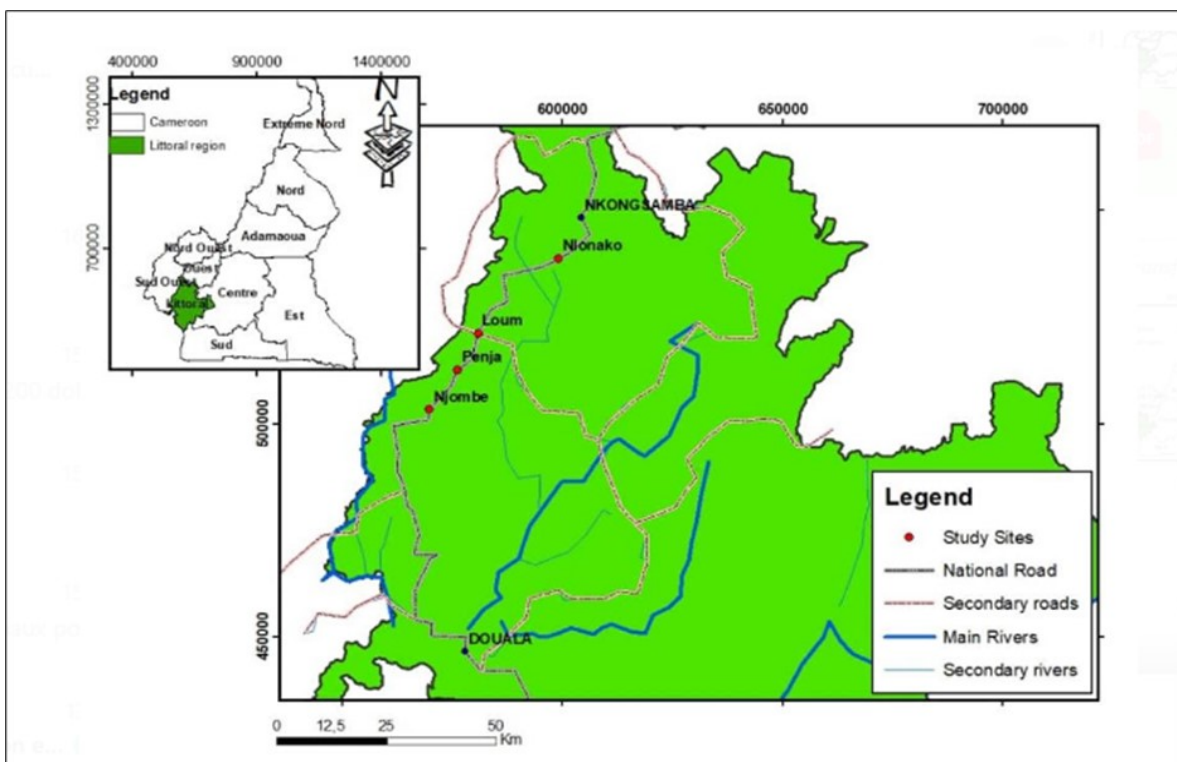


Figure 1. Location of the study area and hydrographic network

For each animal, the total length (TL); the snout – vent length (SVL) was measured using a 1 mm precision tape measure and an electronic Vernier caliper (F.F. The resolution is 0.01 mm / 0.0005 inc). Body weight (BW) and eviscerated weight (EW) were obtained using an electronic scale balance (Sartorius Competence) of 0.01g precision.

A longitudinal incision was made in the abdomen to carefully, remove the liver and gonads, which were weighed using a 0.01g precision electronic balance.

The sex of the animals was determined after dissection by the presence of eggs in females and testicles in males. Maturity was determined by visual inspection of the gonads. On the basis of this examination, individuals whose sex could not be determined were considered immature (sex undetermined).

Studied Parameters

Population structure and weight-length relationship

- The size structure of the populations was determined according to the snout - vent length (SVL) [24].
- The total length / Snout – vent length and body weight – eviscerated weight relationships were determined by linear regression according to the least squares method, and the equations were as follows:

$$TL = a + b SVL \text{ and } BW = a + b EW$$

Where a is the ordinate of the origin and b the slope of the regression line. TL = total length, BW = Body weight, EW= eviscerated weight.

The length-weight relationship was determined according to the method defined by Peig and Green [25] in the form:

$$BW = a SVL^b,$$

Where a is the regression constant, b is the regression coefficient or allometric coefficient, SVL = Snout – vent length (cm) and BW = Body weight (g).

Condition Factor K

The condition factor K, was calculated using the allometric method from the following formula:

$$K = 100 \times BW/SVL^b,$$

Where BW is the Body weight and SVL is the size of the individuals. To estimate the value of the coefficient b, the weight-length equation was established ($BW = a SVL^b$) and applied to all the individuals collected [23, 25-27].

Statistical analysis

Descriptive analysis (means, standard deviations, percentages) was used. The means were compared using the ANOVA I test, followed by the Duncan test to separate the means. The statistical significance of the coefficient of determination R^2 was estimated and the Student's t-test was used to check whether the values of b were significantly different from the isometric value of $b = 2.50$ at the 5% threshold.

Size classes were defined according to Sturge's rule [28].

$$\text{Number of classes (NC)} = 1 + 3.3 \log_{10} (n)$$

Where n = total number of individuals. The class interval (I) was determined by the following report:

$$I = (SVL \text{ max} - SVL \text{ min}) / NC, \text{ where } SVL = \text{Snout –vent length.}$$

All these analyses were carried out using SPSS version 21.0 with a probability threshold of 5%. The Microsoft Excel 2019 spreadsheet was used to highlight graphs.

Results

*Morphometric characteristics of *Conraua goliath* in the natural environment according to season, maturity stage and sex*

The morphometric characteristics of *Conraua goliath* in the natural environment are shown in Table 1. It appears that the weight of the 139 specimens collected varied between 13 and 2529 g, with significantly higher values ($P < 0.05$) in the dry season (mean: 860.30 ± 672.13 g, $n = 65$), in adults (mean: 963.78 ± 472.39 g, $n = 110$) and in males (mean: 1082.332 ± 576.91 g, $n = 55$). Similarly, their size varied between 5.3 and 33.5 cm, with comparable values ($P > 0.05$) depending on the seasons, and significantly lower in juveniles (mean: 10.05 ± 2.38 cm, $n = 29$).

The snout – vent length (SVL) varied between 12 and 33.5 cm in males (mean: 22.35 ± 4.60 cm, $n = 55$), between 12 and 31 cm in females (mean: 21.11 ± 3.09 cm, $n = 55$), and between 5.3 and 14.3 cm in juveniles (mean: 10.05 ± 2.38 cm, $n = 29$).

*Structure by size of *Conraua goliath* in the natural environment according to season*

The size frequency distribution of this species' populations (Figures 2a, 2b, and 2c) is Caucasian and unimodal (20 cm), with sizes between 18 and 24 cm being most prevalent, and large sizes (29 cm) being less common. When looking at the seasons, the frequency peaks are practically identical. In the dry season, the frequency is bimodal (22 and 23 cm) and unimodal in the wet season (20 cm).

Table 1. Morphometric characteristics of *Conraua goliath* in their habitat according to season, maturity stage and sex

Factor	N	BW (g) Mean ± Standard deviation	SVL (cm) Mean ± Standard deviation
Season			
Dry season	65	860.30 ± 672.13 ^b	19.28 ± 6.63 ^a
Rainy season	74	686.67 ± 394.74 ^a	19.30 ± 5.46 ^a
Maturity stage			
Adults	78	963.78 ± 472.39 ^b	21.86 ± 3.93 ^b
Juveniles	29	87.54 ± 50.91 ^a	10.05 ± 2.38 ^a
Sex			
Male	55	1082.33 ± 576.91 ^c	22.35 ± 4.60 ^c
Female	55	812.12 ± 285.57 ^b	21.11 ± 3.09 ^b
undetermined sex	29	87.54 ± 50.91 ^a	10.05 ± 2.38 ^a

N: number of specimens; a, b: The values in the same column with the same letters are not significantly different from each other (P > 0.05). BW = body weight, SVL = snout – vent length

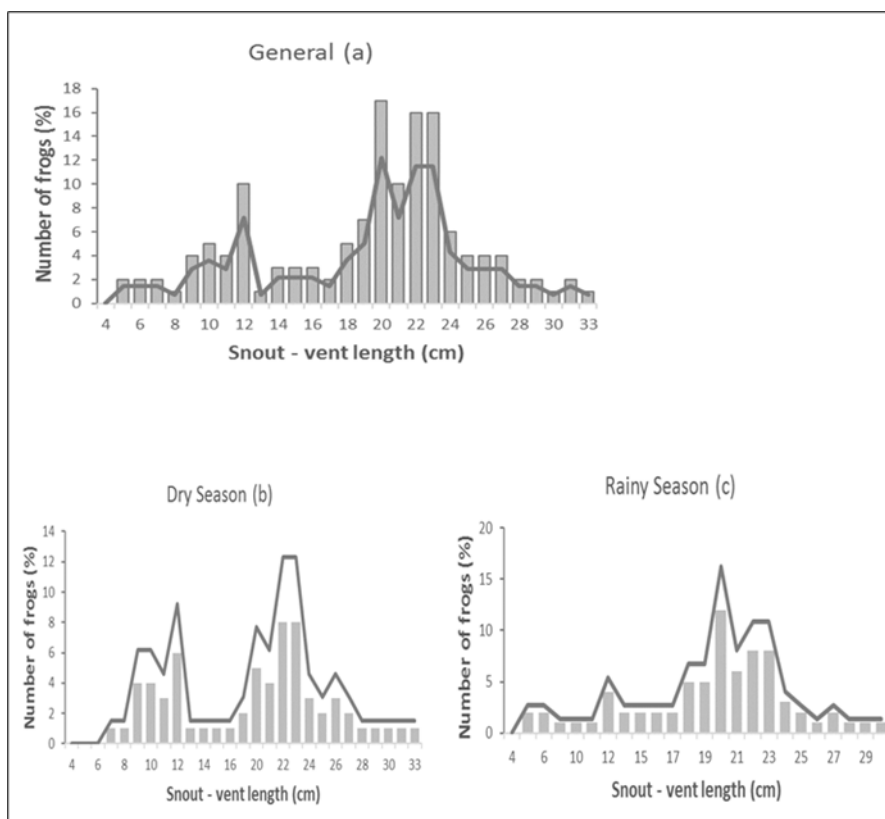


Figure 2. Size frequency distribution of *Conraua goliath* depending on the: (a) total population; (b) dry season, and (c) rainy season in its natural environment:

Body weight / eviscerated weight and Total length / Snout – vent length relationships

Body weight has a strong positive and significant correlation ($P < 0.05$) with eviscerated weight ($r = 0.992$). The regression equation was $PT = 0.846 Pev + 6.380$ ($R^2 = 0.986$, $N = 139$), (Figure 3a).

Total length is strongly and significantly ($P 0.001$) correlated with snout-vent length ($r= 0.984$). (Figure 3b) The regression equation was $TL = 2.245 SVL+ 1.791$ ($R^2 = 0.969$, $N = 139$).

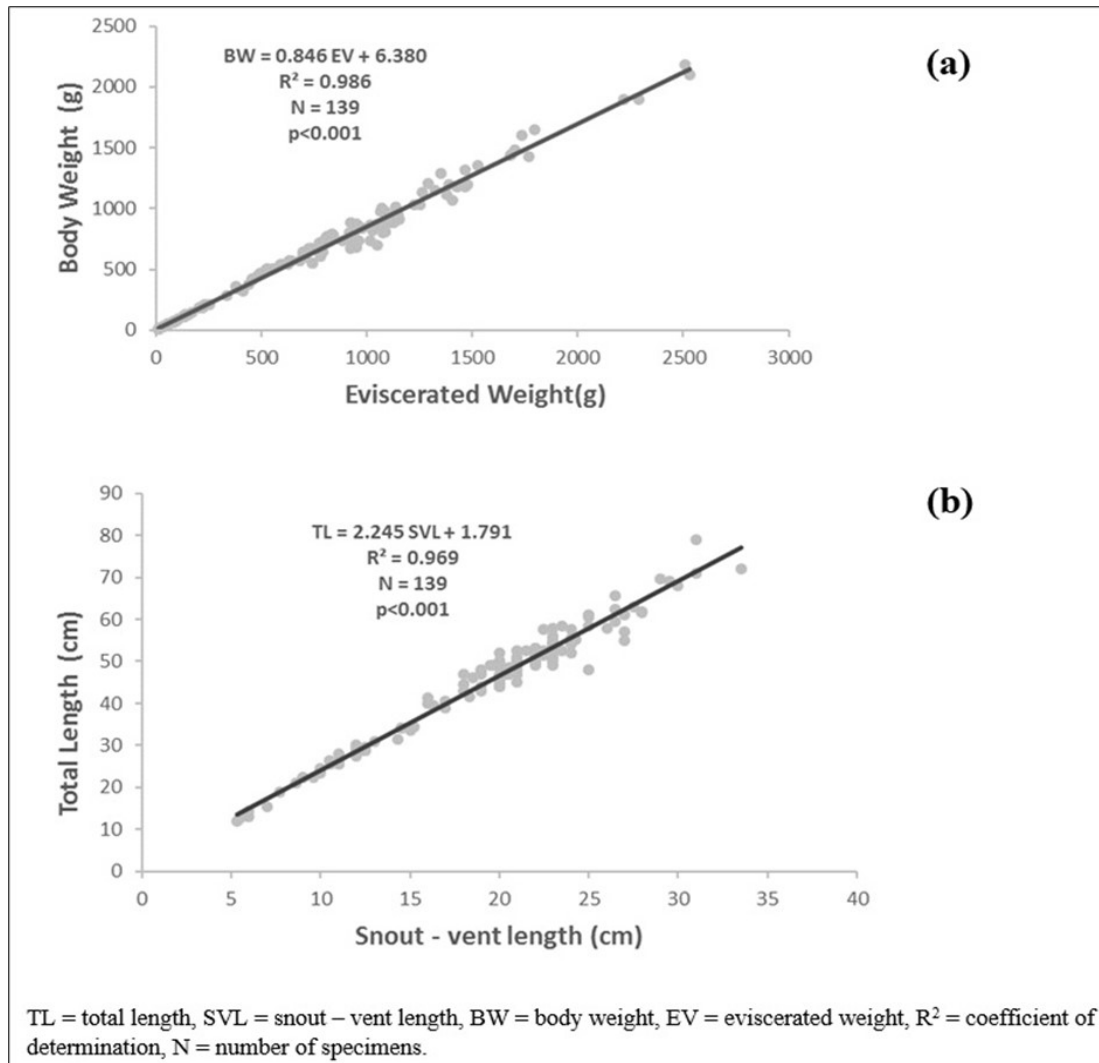


Figure 3. Total weight-eviscerated weight relationships (a), Total length- snout vent length relationship (b) of *Conraua goliath* in its natural environment.

BodyWeight / Snout – vent length relationship of Conraua goliath

Snout-vent length is strongly and positively correlated ($P < 0.05$) with body weight ($R^2=0.975$). The general equation was $BW = 0.074 SVL^{3.033}$ (Figure 4). In addition, the value of b was significantly higher than 2.50 ($P < 0.05$). Regarding the sex, equations were $BW = 0.136 SVL^{2.853}$ ($R^2 = 0.867$, $N = 55$), $BW = 0.898 SVL^{2.213}$ ($R^2 = 0.613$, $N = 55$), and $BW = 0.096 SVL^{2.889}$ ($R^2 = 0.953$, $N = 29$) respectively for males, females, and undetermined (Figure 4). b was less than 2.50 in females and greater than 2.50 in males and undetermined sex ($P < 0.05$), indicating two types of growth respectively: negative allometric growth pattern ($b=2.213$) and isometric growth pattern ($b=2.853$ and $b=2.889$).

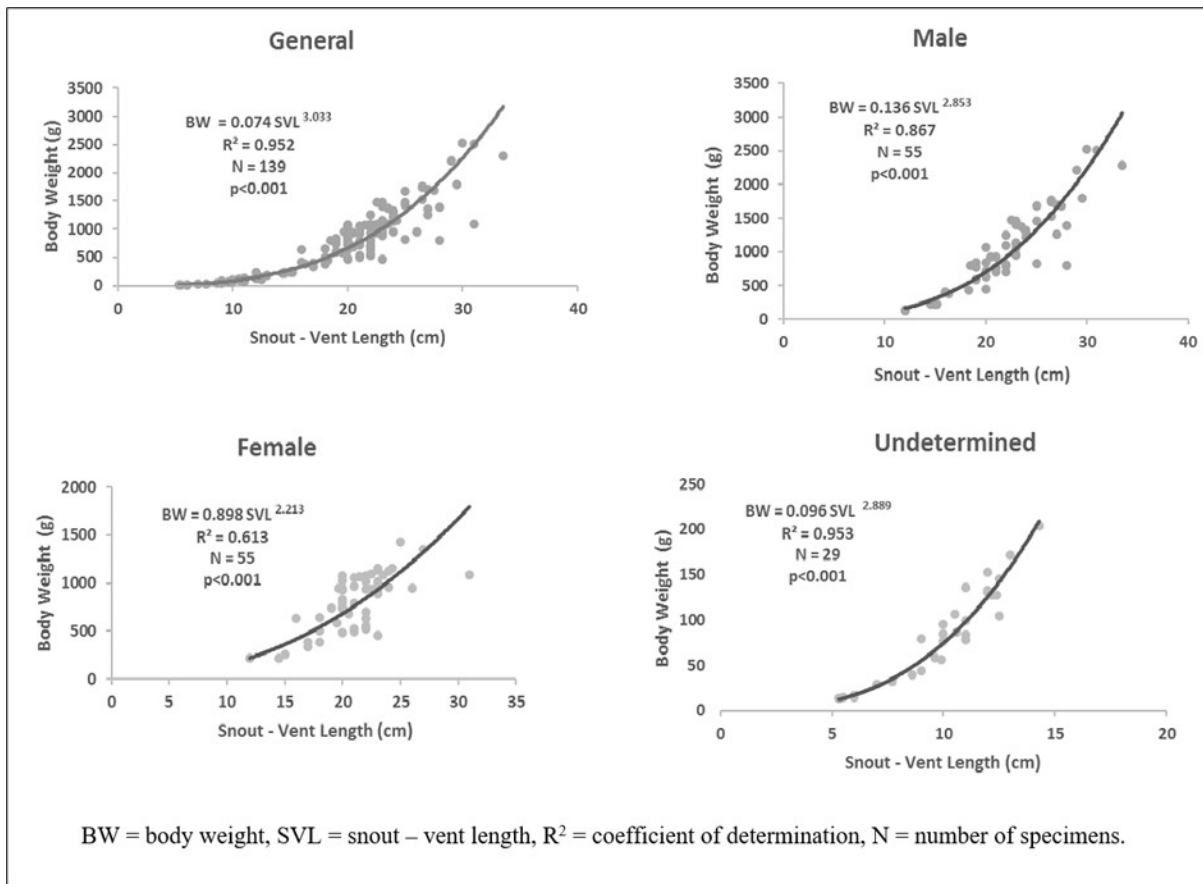


Figure 4. Body weight – snout – vent length Relationship of *Conraua goliath* depending on sex in its natural environment

Body Weight / Snout – vent length relationship, growth pattern, and condition factor K depending on season

Depending on the season, snout-vent length is positively and significantly correlated ($P < 0.05$) with body weight (dry season: $r = 0.988$; rainy season: $r = 0.964$). The allometric coefficient b , was larger than 2.50 ($P < 0.05$), indicating isometric growth (dry season: $b = 3.24$; rainy season: $b = 2.84$). Table 2 summarizes the condition factor k values, which show that they were comparable ($P > 0.05$). The highest readings, however, were recorded during the dry season (7.91 1.61).

Table 2. Body Weight – Snout Vent Length Relationship, growth type and condition factor K of *Conraua goliath* according to season.

Season	Body weight – Snout - Sent Length Relationship Parameters						Type of growth	Condition factor K
	N	Equation $BW = a SVL^b$	R^2	r	a	b		
Dry	65	$BW = 0.042 SVL^{3.241}$	0.978	0.988** *	0.042	3.24	isometric	7.91 ± 1.61^a
Rainy	74	$BW = 0.128 SVL^{2.840}$	0.930	0.964** *	0.128	2.84	isometric	7.69 ± 2.21^a
Total	139	$BW = 0.074 SVL^{3.033}$	0.952	0.975** *	0.074	3.03	Isometric	7.80 ± 1.95

N = number of specimens; BW= Body weight; SVL = Snout Vent Length; R^2 = Coefficient of determination; r = Coefficient of correlation; a = significance threshold; b = allometric coefficient, Mean \pm Standard Deviation, ***high significant correlation ($p < 0.001$).

Condition factor K depending on sex and size classes

Figures 5a and 5b illustrate how condition factor K varies with sex and total length class. In general, the values of this parameter ranged from 3.28 to 14.24 (mean: 7.80 ± 1.95). When considering the sexes, the highest values were recorded for males. In fact, the condition factor varied from 3.28 to 12.14 (mean = 8.13 ± 1.87) for males, from 3.63 to 13.28 (mean = 7.84 ± 2.23) for females, and from 4.95 to 10.14 (mean = 7.08 ± 1.26) for undifferentiated sexes. However, no significant differences in sex were found for this parameter ($P > 0.05$).

The condition factor K had statistically significant low values ($P < 0.05$) (mean: 5.45 ± 2.15) in frogs having total lengths greater than 70 cm compared to values obtained in frogs with total lengths between 40 and 45 cm (mean: 9.29 ± 2.61).

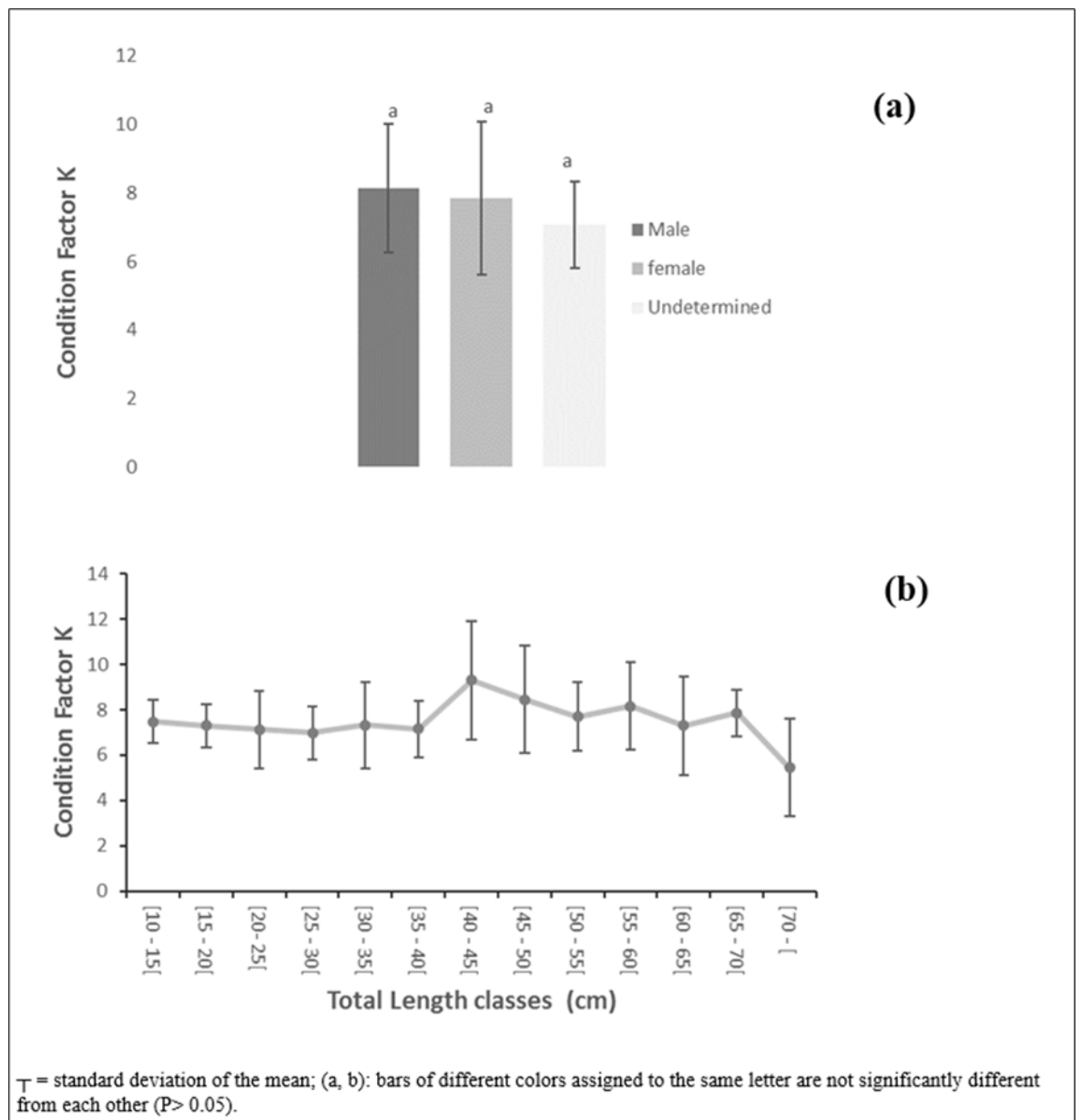


Figure 5. Condition factor K depending on the sex (a) and size (b) in *Conraua goliath*

Discussion

Size structure of the population

The maximum size (SVL) observed in *Conraua goliath* was 33.5, corresponding weight of 2529g. This is the world largest frog species [29]. This biological characteristic is a good indicator of zootechnical performance that can be expressed in livestock environments. In this study, large-sized subjects are much more common in males than females, which contradicts the general patterns of body size variation in anurans that females are larger than males. [30-34]. Studies conducted on parental care behavior in *Conraua goliath* by Schäfer et al. [12] report that, the atypical nest construction could explain the gigantism observed in this species. In fact, according to the research carried out by these authors, the males took care of their offspring by constructing nests with rocks that weighed up to 2 kg, or two-thirds of their own weight. According to the same authors, it is not because these frogs are large that they build such nests, but it is because they initially decided to build these nests that they became bigger over time. However, some studies corroborate our findings that size sexual dimorphism may be in favor of males [23, 35], due to the beneficial effect of competing for food resources [36].

The distribution frequency of the sizes is bimodal in the dry season (22 and 23 cm) and unimodal in the rainy season (20 cm), and the largest number of individuals collected is concentrated between 18 and 24 cm. These differences may be related to different environmental conditions and a high segregation in microhabitats in terms of maturity stages [15]. On the other hand, these modes represented on the histogram in the dry season would correspond to the breeders who gave birth to individuals who became juvenile in the rainy season. Our observations also revealed that *C. goliath* is relatively abundant during the rainy season. This result is consistent with that of the study of *Rhinella yanachaga* in Peru [37] which shows that this species is abundant during the rainy season. Indeed, the breeding season in the Goliath frog is between October and March, which could explain the abundance of *C. goliath* during this season since the genitors and juveniles derived from the metamorphoses of the calves dense the effectiveness of the population. Several studies have shown that anurans are more abundant during the rainy season, as higher rainfall promotes their development and reproduction [38-42]. For example, in Venezuela, during the heavy rainy season, *Hyalinobatrachium duranti* showed high abundance in a cloudy forest [43]. In fact, the constant presence of fog and clouds leads to a reduction in solar radiation, which has as a result a decrease in temperature and an increase in relative humidity that favor the activity of amphibians throughout the year [44].

Weight - length relationship

A high correlation have been observed between Body weight and Snout vent length of *Conraua goliath*, confirming the results obtained by Nguessu [13] in studies conducted on the same species in the Moungo and Nkam.

According to Vazzoler [45], populations with a regression coefficient b between 2.50 and 4.00 have an isometric growth pattern. The regression coefficient ($b = 3.03$) obtained in *C. goliath* shows that the shape of the body has not changed with growth, which is called isometric growth pattern. These results are comparable to those obtained in *L. macrosternum* from Brazil ($b = 3.012$) [27] and *L. latrans* from Argentina ($b = 3.13$) [23]. In this study, males are significantly larger than females. It is also shown that the sex of the frogs influences the relationship between Snout – vent length and body weight. This disparity in the weight-length relationship could be explained by sexual dimorphism, which leads in distinct body structures between the sexes and thus dramatically different b regression coefficients. Thus, growth

range from isometric in males ($b = 2.82$) and undifferentiated sexes ($b = 2.85$) to negative allometry in females ($b = 2.21$). This difference in growth between males and females could be explained by the breeding season, during which females preparing to lay eggs stop feeding, whereas males do not, as they are occupied with preparing to lay eggs and therefore expend more energy and must compensate for this by eating more. The value of the regression coefficient b observed in *C. goliath* ranged from 2.89 in the rainy season to 3.24 in the dry season. This result contradicts the hypothesis of Brown et al. [46] that during the rainy season, frogs may exhibit greater size, higher growth rates, accumulation of energy reserves and increased gonadal development. However, the difference in regression coefficients between the two seasons could be explained by the fact that b depends on food availability, habitat type and even breeding season.

Condition factor K

The condition factor K is an index that indicates the effect of environmental factors on animal comfort [27]. In this study, *Conraua goliath* recorded a lower value (7.80) than value observed (8.64) in *Sclerophrys maculate* [47]. The highest K values were obtained in the dry season (7.91) compared to those recorded in the rainy season (7.69). In addition, this parameter oscillated between the different sizes, so we registered low and high values in both juveniles and adults. This variation can be attributed to the influence of the reproductive cycle and to an annual or seasonal variation in the abundance of food in the habitat, confirming the studies carried out by Brodeur et al. [23] on *L. latrans*. Energy reserves and body condition of amphibians are closely linked to their reproductive cycle, which in turn is highly dependent on climate. According to Zhelev et al. [48], the variation in this parameter may also be related to the presence of pesticides and fertilisers used in agriculture, which are found in the frog ecosystem. The low values recorded in females (7.84) indicate that *C. goliath* uses its energy reserves in muscle and fat during the reproductive period. In fact, during egg maturation, females significantly increase the use of gonadal adipose tissue and its decrease can be observed during this period [46]. Studies conducted by Chaves et al. [27] on the species *L. macrosternum* showed a significant correlation between the condition factor k values and the gonado-somatic ratio, which reflected greater energy expenditure for gametogenesis. On the other hand, higher K values in males (8.13) may be associated not only with a higher intensity of the food activity of the species *Conraua goliath*, with subsequent accumulation of body fat, but also with the fact that males have the burden of preparing for the ponte and therefore expend more energy and, therefore, must compensate for these effort by feeding more. It is interesting to note that a lower value of K was recorded in juveniles (7,08). This result corroborates that obtained by Brodeur et al. [23] with *L. latrans*. This could be related to their sexual maturity. In fact, juvenile frogs have not yet started to accumulate energy reserves and gonadal tissue for reproduction. However, literature contains very little information about the body condition and energy reserves of juvenile frogs to further explain or describe this phenomenon.

Conclusion

At the end of this study on the structure size, weight-length relationship, and condition factor K of *Conraua goliath* in the natural environment, the main conclusions are as follows:

Analysis of the size structure of *Conraua goliath* reveals a significant difference in size between the sexes. Independently of season, the maximum size was observed in males, while the minimum size was recorded in undetermined, followed by females. The frequency of size distribution varies according to the season. This species is more abundant during the rainy season.

The frogs captured in this habitat showed an isometric growth pattern. However, this growth varied according to sex. It ranged from isometric in males and undetermined sexes to negative allometry in females.

The condition factor K was greater than 1 regardless of season or sex, which indicates good physical condition in the habitat. The values of this parameter were significantly different between the length classes, but comparable between the sexes.

Conraua goliath can be considered as a large frog, a biologically characteristic species that is used to indicate optimal zootechnical performance. However, to better understand its life cycle, its growth characteristics need to be studied.

References

1. IUCN. 2020. Red List of Threatened Species. © International Union for Conservation of Nature and Natural Resources. p 2307-8235.
2. Collins JP, Storfer A. 2003. Global amphibian declines: sorting the hypotheses. *Diversity and distributions* 9(2):89-98.
3. Bellard C, Cassey P, Blackburn TM. 2016. Alien species as a driver of recent extinctions. *Biology letters* 12(2):20150623.
4. IUCN. 2008. The IUCN Global Amphibian Assessment. . p Available from: <http://www.iucnredlist.org>.
5. Collins JP, Crump ML, Lovejoy III TE. 2009. *Extinction in our times: global amphibian decline*: Oxford University Press.
6. Warkentin IG, Bickford D, Sodhi NS, Bradshaw CJ. 2009. Eating frogs to extinction. *Conservation Biology* 23(4):1056-1059.
7. Efenakpo OD, Ayodele IA, Ijeomah HM. 2016. Assessment of frog meat utilisation in Ibadan, Oyo State, Nigeria. *Journal of Research in Forestry, Wildlife and Environment* 8(3):31-43.
8. Coulibaly ND, Zigué B. 2021. Exploitation et traits de menaces des grenouilles d'un intérêt socio-économique dans la province du Ganzourgou au Burkina Faso, Afrique de l'Ouest. *International Journal of Biological and Chemical Sciences* 15(3):1090-1103.
9. Casimir BY, Faustin ZBZ, Norbert KK, Adjehi D. 2022. Gears and Modes of Exploitation of Edible Frogs in the Peri-Urban Localities of Man, Côte d'Ivoire. *Asian Research Journal of Agriculture* 15 (4):238-244.
10. Kia G, Tijjani F, Otolorin R. 2018. An evaluation of intestinal parasites in edible frogs (*Hoplobatrachus* spp) sold for consumption in Zaria, Kaduna State, Nigeria. *Nigerian Veterinary Journal* 39(3):209-216.
11. Oungbe KV, Adeba PJ, Blahoua KG, N'douba V. 2018. Systematic inventory of anuran species (amphibians) in three agro-industrial zones in the Southeast of Cote d'Ivoire. *Journal of Applied Biosciences* 131:13271-13283.
12. Schäfer M, Tsekané SJ, Tchassam FAM, Drakulić S, Kamenj M, Gonwouo NL, Rödel M-O. 2019. Goliath frogs build nests for spawning—the reason for their gigantism? *Journal of Natural History* 53 (21-22):1263-1276.

13. Nguessu Charles. 2014. Caractérisation socio-économique et technique de l'exploitation illicite de la grenouille goliath dans les Départements du Moungo et du Nkam dans la Région du Littoral: Université de Dschang, Faculté d'Agronomie et des Sciences Agricoles. 73 p p.
14. Nkouateu TEI. 2015. Etude de quelques paramètres biologiques des grenouilles exploitées dans la partie Nkam-Nord (Nord-Makombé) : Conraua goliath (Boulenger, 1906), Conraua crassipes (bouchholz & peters 1875) et « mbouug ntehgne » (espèce locale non identifiée) [Mémoire d'Ingénieur Halieute]: Université de Douala. Institute Of Fisheries And Aquatic Sciences At Yabassi. 96pp
15. Gonwouo N, Schaefer M, Tsekané S, Hirschfeld M, Tchassem FAM, Roedel M-O. 2022. Goliath Frog (*Conraua goliath*) abundance in relation to frog age, habitat, and human activity. *Amphibian & Reptile Conservation* 16(2):104-119.
16. Channing A. 2012. A new species of rain frog from Namaqualand, South Africa (Anura: Brevicipitidae: Breviceps). *Zootaxa* 3381(1):62-68.
17. Nguete Nguiffo D, Mpoame M, Wondji CS. 2019. Genetic diversity and population structure of goliath frogs (*Conraua goliath*) from Cameroon. *Mitochondrial DNA Part A* 30(4):657-663.
18. Blackburn DC NS, Barej MF, Doumbia J, Hirschfeld M, Kouamé NG, Lawson D, Loader S, Ofori-Boateng C, Stanley EL, et al. 2020. Evolution of the African Slippery Frogs (Anura : *Conraua*), including the world's largest living frog. *Zoologica Scripta* 49:684–696.
19. Daniel NN, Josue WP, Mpoame M. 2015. Gastro-intestinal helminths of goliath frogs (*Conraua goliath*) from the localities of Loum, Yabassi and Nkondjock in the Littoral Region of Cameroon. *Global Ecology and Conservation* 4:146-149.
20. Moumegni LFM, Yemdjie DD, Tadjong RN, Sonhafouo VM, Kana JR, Tchoumboue J. 2021. The Feeding Regime of Goliath Frog (*Conraua goliath*)(Boulenger, 1906) in the Equato-guinean Zone of Cameroon. *Genetics & Biodiversity Journal* 5(1):136-146.
21. Martin D. 1965. Les sols du Mungo et leurs utilisations. *Orstom*:1-27.
22. Djoufack V. 2011. Etude multi-échelles des précipitations et du couvert végétal au Cameroun: Analyses spatiales, tendances temporelles, facteurs climatiques et anthropiques de variabilité du NDVI: Université de Bourgogne.
23. Brodeur JC, Damonte MJ, Candiotti JV, Poliserpi MB, D'Andrea MF, Bahl MF. 2020. Frog body condition: Basic assumptions, comparison of methods and characterization of natural variability with field data from *Leptodactylus latrans*. *Ecological Indicators* 112:106098.
24. Laurin G. 1994. Démographie, morphométrie et fécondité chez deux populations québécoises de grenouilles du nord (*Rana septentrionalis*): Université du Québec à Trois-Rivières.
25. Peig J, Green AJ. 2009. New perspectives for estimating body condition from mass/length data: the scaled mass index as an alternative method. *Oikos* 118(12):1883-1891.
26. Lima-Junior SE, Cardone IB, Goitein R. 2002. Determination of a method for calculation of Allometric Condition Factor of fish. *Acta Scientiarum: Biological and Health Sciences*:397-400.
27. Chaves MF, TeNóRio FC, Santos IL, JCL C, Texeira VW, Moura GJ, Texeira AA. 2017. Correlations of condition factor and gonadosomatic, hepatosomatic and lipo-somatic relations of *Leptodac-*

- tylus macrosternum (ANURA: Leptodactylidae) in the Brazilian Semi-arid. *Anais da Academia Brasileira de Ciências* 89:1591-1599.
28. Scherrer. 1984. *Biostatistique*. Ed Gaëtan Morin:850 p.
 29. Sabater-Pi J. 1985. Contribution to the biology of the giant frog (*Conraua goliath*, Boulenger). *Amphibia-reptilia* 6(2):143-153.
 30. Shine R. 1979. Sexual selection and sexual dimorphism in the Amphibia. *Copeia*:297-306.
 31. Serra-Cobo J, Uiblein F, Martínez-Rica JP. 2000. Variation in sexual dimorphism between two populations of the Pyrenean salamander *Euproctus asper* from ecologically different mountain sites. *Belgian Journal of Zoology* 130(1):39-46.
 32. Kupfer A. 2007. Sexual size dimorphism in amphibians: an overview. *Sex, size and gender roles: evolutionary studies of sexual size dimorphism* 5:50-60.
 33. Reinhard S, Renner S, Kupfer A. 2015. Sexual dimorphism and age of Mediterranean salamanders. *Zoology* 118(1):19-26.
 34. Zhang X, Xiong J, Lv Y, Zhang L, Sun Y. 2014. Sexual size and shape dimorphism in the Wushan salamander, *Liua shihi* (Liu, 1950)(Urodela: Hynobiidae). *Italian Journal of Zoology* 81(3):368-373.
 35. Patrelle C, Hjernquist MB, Laurila A, Söderman F, Merilä J. 2012. Sex differences in age structure, growth rate and body size of common frogs *Rana temporaria* in the subarctic. *Polar Biology* 35:1505-1513.
 36. Monnet J-M, Cherry MI. 2002. Sexual size dimorphism in anurans. *Proceedings of the Royal Society of London Series B: Biological Sciences* 269(1507):2301-2307.
 37. Huamán-Trucios S, Camel V, Orellana Mendoza E, Pyles M, von May R. 2021. Abundance and microhabitat use of the Endangered toad *Rhinella yanachaga* (Anura: Bufonidae) in the cloud forest of Yanachaga-Chemillén National Park, Peru. *Amphibian & Reptile Conservation* 15(2):1-9.
 38. Ceron K, Santana DJ, Lucas EM, Zocche JJ, Provete DB. 2020. Climatic variables influence the temporal dynamics of an anuran metacommunity in a nonstationary way. *Ecology and Evolution* 10(11):4630-4639.
 39. Linause TM, Pereira-Ribeiro J, Cozer J, Ferregueti AC, Bergallo HG, Rocha CFD. 2020. Anurans associated with streams and riparian zones in a Brazilian Atlantic Forest remnant: diversity, endemism and conservation. *Herpetological Conservation and Biology* 15(2):306-317.
 40. Ortega-Andrade HM, Tobar-Suárez C, Mónica Arellano M. 2011. Tamaño poblacional, uso del hábitat y relaciones interespecíficas de *Agalychnis spurrelli* (Anura: Hylidae) en un bosque húmedo tropical remanente del noroccidente de Ecuador. *Papéis Avulsos de Zoologia* 51:01-19.
 41. Narvaes P, Bertoluci J, Rodrigues MT. 2009. Composição, uso de hábitat e estações reprodutivas das espécies de anuros da floresta de restinga da Estação Ecológica Juréia-Itatins, sudeste do Brasil. *Biota Neotropica* 9:117-123.
 42. Zaracho VH, Lavilla EO. 2015. Diversidad, distribución espacio-temporal y turnos de vocalización de anuros (Amphibia, Anura) en un área ecotonal del nordeste de Argentina. *Iheringia Série Zoológica* 105:199-208.
 43. Villa PM, Pérez-Sánchez AJ, Nava F, Acevedo A, Cadenas DA. 2019. Local-scale seasonality shapes anuran community abundance in a cloud forest of the tropical Andes. *Zoological Studies* 58.

44. Segev O, Andreone F, Pala R, Tessa G, Vences M. 2012. Reproductive phenology of the tomato frog, *Dyscophus antongili*, in an urban pond of Madagascar's east coast. *Acta Herpetologica* 7 (2):331-340.
45. Vazzoler A. 1996. *Biologia da reprodução de peixes teleósteos: teoria e prática*. Maringá: Eduem 169.
46. Brown GP, Shilton CM, Shine R. 2011. Measuring amphibian immunocompetence: validation of the phytohemagglutinin skin-swelling assay in the cane toad, *Rhinella marina*. *Methods in Ecology and Evolution* 2(4):341-348.
47. Amuzie Chidinma C, Green Anne F, Ekerette Idorenyin B. 2019. Effect of Anthropogenic Light at Night (ALAN) on Condition Factor (CF) and Hepato-somatic Index (HSI) of *Sclerophrys maculata*. *International Journal of Wildlife and Endangered Species Conservation (IJWESC)* 2 (01): 37-43
48. Zhelev ZM, Tsonev SV, Arnaudova DN. 2017. Health status of *Pelophylax ridibundus* (Pallas, 1771)(Amphibia: Ranidae) in a rice paddy ecosystem in southern Bulgaria: body condition factor and fluctuating asymmetry. *Acta Zool Bulg* 8:169-176.